

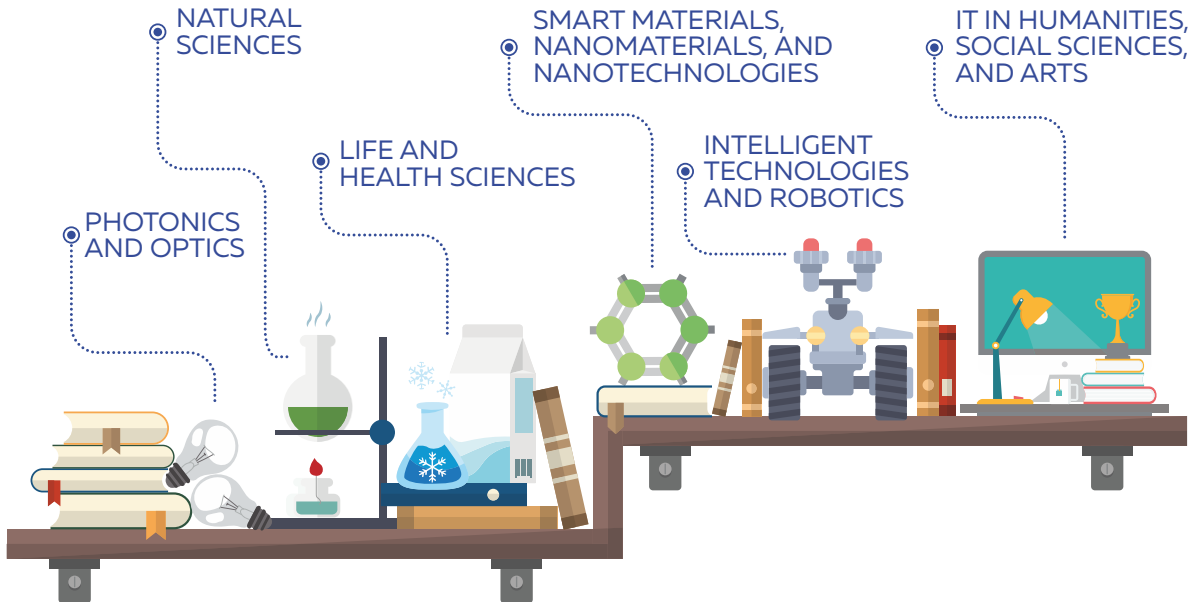
# ITMO UNIVERSITY GUIDE FOR **MASTER'S STUDENTS**





# ITMO UNIVERSITY

is a national research university and one of Russia's leading higher education institutions in the fields of IT and photonics.





# Rector's Welcome

Hello! My name is Vladimir Vasilyev, and I'm the Rector of ITMO University.

Don't be surprised if you see me hop off my bicycle in the morning, don a magician's outfit, or come equipped with a Darth Vader mask and lightsaber when the finals start: like all members of our large and friendly ITMO.FAMILY, I'm no stranger to strangeness.

So, on behalf of me to you: may the Force be with you and the warmest of all welcomes to ITMO University!



# First Vice Rector's Welcome

Dear International Student,  
Welcome to ITMO University! We are glad that you have joined or will be joining us at ITMO University and we hope that your stay in St. Petersburg will be filled with exciting opportunities and unforgettable memories.

To help you take full advantage of your experience at ITMO University, we have compiled this Guide to provide you with practical information that you will need before your arrival and during your stay in St. Petersburg.

We wish you good luck with your studies at ITMO University, and hope that you will enjoy your time in our beautiful city!

**Daria K. Kozlova**

# TABLE OF CONTENTS



SCHOOLS AND KEY FACULTIES.....	10
STUDENT SERVICES OFFICE .....	11
INTERNATIONAL OFFICE .....	12
INTERNATIONAL LABORATORIES AND RESEARCH CENTERS .....	15
ISU .....	19
CAMPUS MAP .....	20
YOUR EDUCATION .....	21
ENTREPRENEURSHIP AT ITMO UNIVERSITY .....	23
CAREER CENTER .....	26
CENTER FOR SCIENCE COMMUNICATION .....	27
ACADEMIC WRITING LAB .....	28
WELCOME TO RUSSIA! .....	29



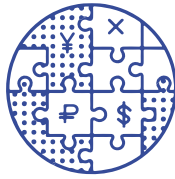


EXPERIENCE THE WORLD WITH ITMO .....	30
DOUBLE-DEGREE PROGRAMS .....	32
CAMPUS CARD .....	33
STUDENT TRAVEL CARD .....	34
DORMITORIES .....	35
MEDICAL ASSISTANCE .....	36
STUDENT LIFE .....	38
USEFUL LINKS .....	39

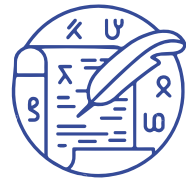
# SCHOOLS AND KEY FACULTIES



**COMPUTER  
TECHNOLOGIES  
AND CONTROL**



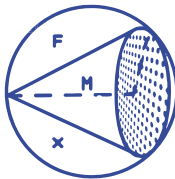
**TRANSLATIONAL  
INFORMATION  
TECHNOLOGIES**



**TECHNOLOGICAL  
MANAGEMENT  
AND INNOVATIONS**



**BIOTECHNOLOGY  
AND CRYOGENIC  
SYSTEMS**



**PHOTONICS**



**INTERNATIONAL  
DEVELOPMENT  
AND PARTNERSHIP**

# STUDENT SERVICES OFFICE

The Student Services Office is your go-to place for any issues or questions you might have while at ITMO University. Here, you can request various official documents such as enrollment certificates, transcripts of record, and much more - and you can do it online, too!

## **Come to the Office if you need to:**

- pick up or renew your student card;
- update your personal file in the university's database;
- request academic leave/transfer/readmission/expulsion;
- postpone your exams when necessary;
- retrieve your educational documents (certificates or diplomas) for a temporary period of time.

## **Other issues the Office can help you with include:**

- scholarships and financial aid;
- tuition fees;
- educational matters;
- dormitory move-in or transfer;
- need a place to work on your own or with a team? Come to the coworking area!

If you've got a question but don't know who to ask, the Student Service Office is there for you!

Lomonosova St. 9, room 1400 (4th floor)

Mon-Fri, 9 AM - 7 PM

so@itmo.ru

+7 (812) 607-04-74

Follow @itmolnia on Telegram for all the latest updates and news

# INTERNATIONAL OFFICE

The International Office's mission is to enhance our international students' academic experience and help them quickly and easily adapt to life at ITMO and in St. Petersburg.

## Migration Services Office

The first place to visit upon your arrival in St. Petersburg. Here, the staff will help you with your migration registration, visa extension, and any other travel-related matters.

- 📍 Lomonosova St. 9, room 2139d  
Mon-Fri, 10 AM - 6 PM
- ✉️ dsnekrasova@itmo.ru
- 📞 + 7 (812) 315-05-21

## International Students Learning and Support Center

**Here, you will receive assistance on matters of:**

- medical insurance;
- tuition fees;
- government scholarships;
- the Foundation Program.

- 📍 Lomonosova St. 9, room 2139  
Mon-Fri, 10AM - 6 PM
- 📞 +7 (812) 314-77-75
- ✉️ int.students@itmo.ru



## International Educational Programs Department

### The department deals with all things concerning:

- international Master's programs;
- semester exchange;
- short-term academic mobility (internships, conferences, etc);
- the Study Abroad at Home program.

📍 Lomonosova St. 9, room 2139c

Mon-Fri, 9 AM - 5 PM

☎ +7 (812) 457-17-90

✉ [international@itmo.ru](mailto:international@itmo.ru)



INT.ITMORU

## Foreign Language Training Center

The FLTC offers courses in various foreign languages to students and staff of ITMO. It also conducts language proficiency tests, including IELTS-format testing for academic mobility or employment purposes.

- 📍 **Lomonosova St. 9, rooms 3207, 3208**  
**Mon-Fri, 10 AM - 6 PM**
- ☎ **+7 (812) 607-04-72**
- ✉ **fltc@itmo.ru**

## Internationalization Office

The Internationalization Office is where you can give an interview or write a blog post for ITMO.NEWS. It is also responsible for the content of ITMO University's English-language websites.

- 📍 **Lomonosova St. 9, room 2139a**  
**Mon-Fri, 10 AM - 6 PM**
- ☎ **+7 (812) 572-21-59**
- ✉ **int.news@itmo.ru**

**We're always glad to see you at Lomonosova St. 9, rooms 2139a-L (entrance from the street via porch, to the right of main entrance to ITMO) to help you with any questions you might have!**

# INTERNATIONAL LABORATORIES AND RESEARCH CENTERS

## International Institute “Photonics and Optical Information Technology”

### Heads:

Sergei Kozlov, ITMO  
sakozlov@itmo.ru

Xi-Cheng Zhang, University of Rochester  
xi-cheng.zhang@rochester.edu

### Fields of research:

Nanotechnologies  
Computational optics and optoinformatics  
Holography

## International Research and Educational Center for Physics of Nanostructures

### Heads:

Anatoly Fedorov, ITMO  
a\_v\_fedorov@itmo.ru

Andrei Rogach, City University of Hong Kong  
arogach@itmo.ru

### Fields of research:

Quantum nanostructures  
Biomedicine  
Nonlinear optics

## International Scientific and Research Institute of Bioengineering

### Heads:

Maya Uspenskaya, ITMO  
mv\_ustpenskaya@itmo.ru

Andrey Kajava, CNRS  
andrey.kajava@crbm.cnrs.fr

### Fields of research:

Sensor systems  
Biopolymers  
Smart materials

## International Research Center of Functional Materials and Devices of Optoelectronics

### Heads:

Alexey Romanov, ITMO  
alexey.romanov@niuitmo.ru

Kharri Kalevi Lipsanen, Aalto University  
harri.lipsanen@aalto.fi

### Fields of research:

Silicon and fiber photonics  
Epitaxial nanostructures  
Superfast semiconductor emitters  
and photodetectors

## **International Laboratory "Computer Technologies"**

### **Heads:**

Vladimir Ulyantsev, ITMO  
[ulyantsev@itmo.ru](mailto:ulyantsev@itmo.ru)

Valeriy Vyatkin, Aalto University  
[valeriy.vyatkin@aalto.fi](mailto:valeriy.vyatkin@aalto.fi)

### **Fields of research:**

Machine learning  
Speech systems  
Bioinformatics and genomics

## **International Research Center "Solution Chemistry of Advanced Materials and Technologies"**

### **Heads:**

Vladimir Vinogradov, ITMO  
[vinogradov@scamt-itmo.ru](mailto:vinogradov@scamt-itmo.ru)

David Avnir,  
Hebrew University of Jerusalem  
[david.avnir@mail.huji.ac.il](mailto:david.avnir@mail.huji.ac.il)

### **Fields of research:**

Nanopharmacy  
Functional materials  
Genomics and microbiology

## **TROIKA: Technology and Research On Information- Driven Knowledge Alliance**

### **Heads:**

Alexander Boukhanovsky, ITMO  
[boukhanovsky@mail.ifmo.ru](mailto:boukhanovsky@mail.ifmo.ru)

Peter M.A. Sloom, University of Amsterdam  
[p.m.a.sloom@uva.nl](mailto:p.m.a.sloom@uva.nl)

### **Fields of research:**

Decision support systems  
Smart city technologies  
Mathematical modeling

## **International Laboratory of Light-Matter Coupling in Nanostructures**

### **Heads:**

Ivan Iorsh, ITMO  
[i.iorsh@phoi.ifmo.ru](mailto:i.iorsh@phoi.ifmo.ru)

Ivan Shelykh, University of Iceland  
[ishelykh@itmo.ru](mailto:ishelykh@itmo.ru)

### **Fields of research:**

Quantum data processing and storage  
Functional optical materials  
Hybrid polariton-electron systems



## Transnational Scientific and Education UniFEL Center for Advanced Methods of Materials Research

### Heads:

Alexey Romanov, ITMO  
[alexey.romanov@niuitmo.ru](mailto:alexey.romanov@niuitmo.ru)

Serguei Molodtsov, European XFEL  
[serguei.molodtsov@xfel.eu](mailto:serguei.molodtsov@xfel.eu)

### Fields of research:

Nanostructures  
Materials analysis  
Dynamic processes in nanoparticles

## Art & Science Center

### Head:

Aliya Sakhariyeva, ITMO  
[aksakhariyeva@itmo.ru](mailto:aksakhariyeva@itmo.ru)

### Fields of research:

BioArt  
NeuroArt  
AI art

## Digital Humanities Lab

### Heads:

Antonina Puchkovskaia, ITMO  
[aapuchkovskaya@itmo.ru](mailto:aapuchkovskaya@itmo.ru)

Kimon Keramidas,  
NYU College of Arts & Science  
[kimon.keramidas@nyu.edu](mailto:kimon.keramidas@nyu.edu)

### Fields of research:

Data visualization  
Corpus linguistics  
VR/AR in culture

## International Research and Educational Center for Nanophotonics and Metamaterials

### Heads:

Pavel Belov, ITMO  
[p.belov@itmo.ru](mailto:p.belov@itmo.ru)

Yuri Kivshar, Australian National University  
[yuri.kivshar@anu.edu.au](mailto:yuri.kivshar@anu.edu.au)

### Fields of research:

Nano-optomechanics  
Hybrid nanophotonics  
Applied radiophysics

## Adaptive and Nonlinear Control Systems Lab

### Heads:

Alexey Bobtsov, ITMO  
bobtsov@itmo.ru

Romeo Ortega, CNRS  
romeo.ortega@lss.supelec.fr

### Fields of research:

Biomechanics and robotics  
Integrated and embedded systems  
Geometrical methods in control

## Visit

[research.itmo.ru](https://research.itmo.ru)

**to find out more  
about research  
opportunities  
at ITMO University!**



# ISU

ISU is ITMO University's intranet system which you can use to:

- **stay updated** - find out about the latest news, events, competitions, and more;
- **keep an eye on your education** - look up educational programs, curriculum, class schedules, consultations and sessions, study groups;
- **join a student club** - or start your own;
- **review your achievements** - publications, IPs, and projects.

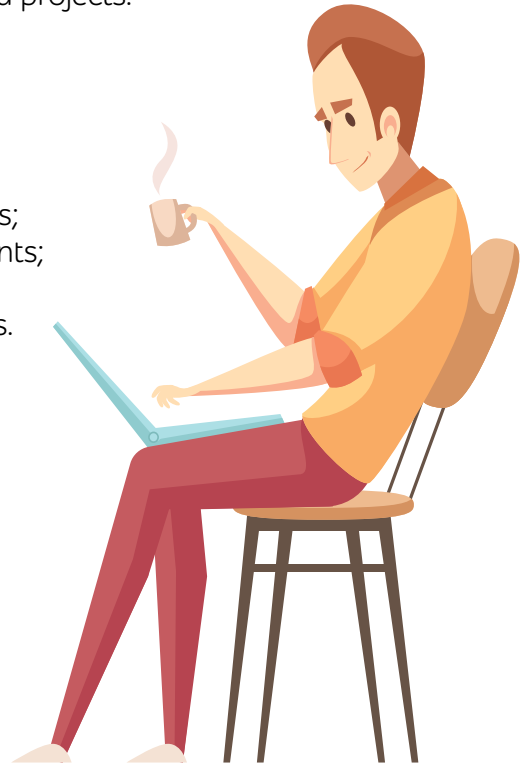
You can also use your personal page to:

- check your class schedule and grades;
- apply for various contests, grants, or scholarships;
- get in touch with your lecturers and fellow students;
- put together a portfolio;
- stay informed about your stipend and tuition fees.



[isu.itmo.ru](https://isu.itmo.ru)

find all this and more using the many apps and services in ITMO University's intranet system!



# CAMPUS MAP



# YOUR EDUCATION

Here at ITMO, learning is all about valuable knowledge, unique opportunities, and active involvement. You'll be studying alongside like-minded peers and taking part in projects of national and international importance.

Our graduates experiment and bring their ideas to life; they exhibit foresight, set trends, and are quick to respond to any challenges of the modern world. Working side by side with scientists all over the world, they advance science and technologies into the future.

## OUR EDUCATIONAL ENVIRONMENT IS ROOTED IN OUR ITMO.CODE

### VALUES

This is what gives us a special perspective and makes us all a large, closely-knit family.

### FUNDAMENTAL

These are the core basics combined with modern disciplines such as Design Thinking, Entrepreneurial Culture, and Creative Technologies.

### PROFESSIONAL SKILLS

This is the heart of your educational program. These are the skills and competencies that will make you a true professional.

### SOFT SKILLS

These are the personal qualities, social skills, and managerial abilities that will make you succeed in working with others.

All programs at ITMO are rooted in the ITMO.CODE, but each student's educational track is unique. Use the following opportunities to shape your own learning path forward:

- core educational modules:  
Digital Culture, Thinking, Creative Technologies,  
Entrepreneurial Culture, and Soft Skills;
- academic mobility programs;
- online courses (MOOCS);
- elective disciplines;
- internships and practical training;
- the Startup as Thesis and Art Project as Thesis initiatives;
- students choose a major before the start  
of their 2nd semester.



# ENTREPRENEURSHIP AT ITMO UNIVERSITY

If research isn't quite your thing, but you'd still love to find an outlet for your ideas, perhaps you'll want to try your hand at entrepreneurship. What could be more exciting than the free flow of brainstorming, the thrill of pitch sessions, and the exhilarating joy of impressing your investors?

## Here's how you can start:

Keep an eye out for updates in ISU and on ITMO.NEWS: we've got regular events that aim to develop the students' entrepreneurial skills. That includes workshops, business games, and much more. There, you'll always be able to meet partners, develop ideas, and form a team.



### Launch your startup:

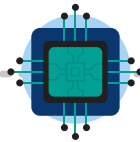
- ITMO Accelerator  
(preacceleration and acceleration tracks)

[vk.com/accelitmo](https://vk.com/accelitmo)  
[facebook.com/accelitmo](https://facebook.com/accelitmo)

- The Interuniversity Entrepreneurship Club

[vk.com/studbizitmo](https://vk.com/studbizitmo)  
[facebook.com/studbizitmo](https://facebook.com/studbizitmo)

- ITMO Technopark



### Need a prototype? Look no further than:

- ITMO Technopark's FabLab
- M2M Engineering Center
- OLIMP Club



### Raise funds and expand your project with the help of:

- Center for Project Development and Fundraising
- Personal Development Center

[itmotech.com](https://itmotech.com)

# ITMO TECHNO PARK

The ITMO Technopark is home to high tech enterprises in the fields of Big Data, VR/AR, microelectronics, neural interfaces, telecommunications, IT, robotics, bioinformatics, and medicine.



## The Technopark is:

- a great place to find an internship or a job;
- an opportunity to have your project reviewed by top experts;
- a chance to test your ideas within an actual enterprise;
- an opportunity to take part in international acceleration programs.

## Got questions?

Visit [technopark.ifmo.ru/en/](http://technopark.ifmo.ru/en/) or write to

✉ [oabaraniuc@itmo.ru](mailto:oabaraniuc@itmo.ru)

📍 [Birzhevaya Liniya 14-16, room 319](#)



## FabLab

Every student at ITMO knows that if they ever need to etch, engrave, 3D-print, or cast something, this is the place to be. The FabLab has all the equipment you'll need to create - and its staff are there to help out.

📍 [Birzhevaya Liniya 14](#)  
🌐 [vk.com/fablabitmo](https://vk.com/fablabitmo)



## Student Science Center

If you want to get into science, but don't know where to start, come here! Get help with a grant application, find an R&D project to join, or take part in the practical project competition.

📍 [Kronverksky Pr. 49, room 309](#)  
✉ [nirs@mail.ifmo.ru](mailto:nirs@mail.ifmo.ru)





# CAREER CENTER

Job openings, internships, practical training, workshops - everything to help you build your career.

## At the Career Center, you can:

- put together a top-notch CV;
- pick a great mentor;
- meet new people and expand your professional network;
- find the right internship or a job;
- take part in the Career Day and attend insightful events.

## Learn more:

- vk.com/careers\_service\_itmo
- 📍 Lomonosova St. 9, room 1312
- ✉ careers@itmo.ru

## ITMO.Mentors

The ITMO.Mentors initiative was launched to give promising Master's and PhD students an opportunity to try their hand at teaching and reduce the workload of the university's lecturers.

Mentors assist in conducting online and offline classes, consult students, help conduct exams, and more.

- 📍 Lomonosova St. 9, room 1418
- ✉ mentors@itmo.ru



Jobs for international  
students and staff



The Center for Science Communication's mission is to establish dialogue between scientists, the mass media, and the general public.

Science communicators make science accessible to everyone and explain the discoveries researchers make - and why they make them. For several years now, ITMO University has been offering a Master's program in Science Communication; the Center also conducts regular open lectures and discussions with notable scientists, science journalists, and writers.

## Pay us a visit if you:

- are planning a public scientific talk;
- would like to learn more about popularization of science;
- want to contribute to SciComm and citizen science projects and initiatives;
- wish to develop your communication skills;
- are interested in subject-specific literature and journals;
- wish to learn more about science communication.

📍 Kronverksky Pr. 49, room 290

✉ [scicomm@itmo.ru](mailto:scicomm@itmo.ru)

🌐 [vk.com/scicomm](https://vk.com/scicomm)

📘 [facebook.com/scicommITMO](https://facebook.com/scicommITMO)



# ACADEMIC WRITING LAB (AWL)

Since its founding, ITMO University's Academic Writing Lab has made it its goal to help Master's and PhD students develop their ability to communicate scientific knowledge in writing. The ability to write properly and easily in English will allow you to share your research with the world and have it published in renowned international journals.

The AWL's tutors provide free individual and group classes. You can also attend numerous seminars on style and grammar, learn more about writing research and review articles, or find out how to put together the best CV or cover letter.

Working on an article, presentation, motivational letter, or conference application? Visit the AWL at any stage of writing to receive a consultation.

**Sign up for a consultation at [awl.itmo.ru](http://awl.itmo.ru) or via email: [awl@itmo.ru](mailto:awl@itmo.ru)**



# WELCOME TO RUSSIA!



It's no secret that adapting to life in an unfamiliar country can be challenging - that's why we do our best to help our international students quickly get a grasp on Russian language and culture.



In 2017, a group of international exchange students founded the student club Get Local. Its members organize various events, including movie nights and even guided trips to some of Russia's many landmarks.



If you're afraid to take that big leap into the unknown, fret not! Thanks to the Buddy System, all international students at ITMO will have someone to help them each step of the way - your Buddy will meet you at the airport, show you around the university, help you move into a dorm, fill out all the necessary paperwork, and become part of our ITMO.FAMILY.



ITMO\_BUDDY\_SYSTEM

## ST. PETERSBURG

Known as the cultural capital of Russia, our city abounds with museums, theaters, and opera houses for you to visit and striking architectural gems to behold. Even the most experienced connoisseurs of culture will find something to do - just check out ITMO.NEWS' Unexplored St. Petersburg series. Or visit our news portal's Experience St. Petersburg section to find out what to do this weekend or simply learn more about the city.



# EXPERIENCE THE WORLD WITH ITMO UNIVERSITY

As an ITMO student, you've got plenty of opportunities to acquire an exciting international experience - that includes short-term and semester exchanges, the Study Abroad at Home program, and the Buddy System.

Fun and growth are guaranteed!

## Short-term exchange

ITMO University encourages its students to participate in international online and offline short-term educational events (conferences, seminars, intensive courses, competitions, etc) and internships. Those participating in such events may be eligible for partial funding coverage through a special competition.

To learn more, please contact [short-term@itmo.ru](mailto:short-term@itmo.ru) or visit [int.itmo.ru/en/internship](http://int.itmo.ru/en/internship)



## Semester exchange

If you've ever dreamed of going on semester exchange, it's time to make it happen! Choose from more than 90 partner universities in more than 25 countries around the world. Twice a year - in February and September - you can participate in the academic mobility contest and travel abroad to study at one of ITMO's partner institutions.

For more information, please contact [outgoing@itmo.ru](mailto:outgoing@itmo.ru) or visit [int.itmo.ru/en/education\\_abroad](http://int.itmo.ru/en/education_abroad)



## Study Abroad at Home

On the fence about going abroad (again)? Now, you can study in another country in English without ever leaving ITMO!

### The Study Abroad at Home program lets you:

- complete a course entirely in English;
- study alongside students from all over the world;
- complete courses in the form of 2-3 week modules;
- receive a certificate of completion at the end;

The list of available courses is updated once a semester; stay updated by visiting [int.itmo.ru/en](http://int.itmo.ru/en) or via ISU's news section.



# DOUBLE-DEGREE PROGRAMS

If you'd like to graduate with not one, but two diplomas, ITMO University's double-degree programs allow you to do just that! Enroll in a program, pass a TOEFL/IELTS test, prepare the necessary paperwork, and get two diplomas in just two years!

## International Educational Programs Office

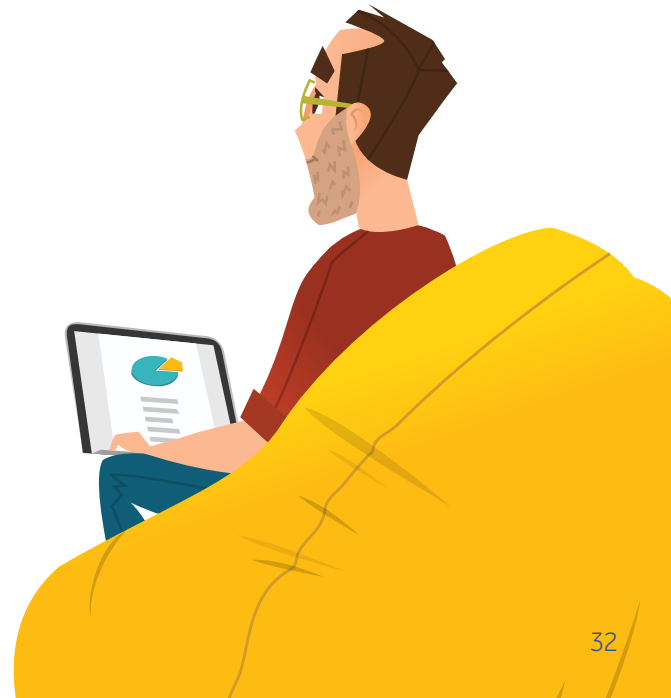
- 📍 Lomonosova St. 9, room 2139k
- ✉️ [outgoing@itmo.ru](mailto:outgoing@itmo.ru)

---

## STUDY ONLINE

The education of tomorrow - today! Thousands of people in Russia and around the world are enrolled in MOOCs published by ITMO University on the Open Education ([openedu.ru](http://openedu.ru)) and edX ([edx.org](http://edx.org)) platforms. Learn our secret to winning programming competitions, explore the intricacies of algorithmic thinking, and solve the challenges of physics and software engineering.

[edx.org/school/itmox](http://edx.org/school/itmox)





# YOUR CAMPUS CARD

Your ITMO.FAMILY campus card is your personalized access key to all of ITMO's campuses and services.

## The card will allow you to:

- enter the university's campuses and dormitories;
- check out books at the library without needing a library card;
- receive discounts and bonuses at ITMO.STORE, the cafeteria, select partner stores, and more.

To receive your personalized ITMO.FAMILY campus card, **you'll need:**

- your passport;
- your student ID.

Students are informed of the times and location where they can pick up their ITMO.FAMILY cards in the beginning of each academic year.

## IMPORTANT

In case of loss of the card, immediately contact the bank's support desk (**+7 812 329-50-50 or [cc@bspb.ru](mailto:cc@bspb.ru)**) to disable the card and request a replacement. Then, visit one of ITMO's Access Control Offices to obtain a temporary pass that you can use until a new ITMO.FAMILY card is issued.

- Kronverksky Pr. 49, room 161
- Lomonosova St. 9, room 1103  
Mon-Thu, 10 AM - 1 PM, 2 PM - 5 PM;  
Fri, 10 AM - 3 PM.



# STUDENT TRAVEL CARD

Don't forget to get your student travel card (available to full-time students only)! The card will allow you to travel using tram, bus, trolleybus, and metro in St. Petersburg at a discount monthly rate.

From September 1 to September 30, you can purchase a temporary (non-personalized) travel card at the ticket offices of any metro station. These cards will expire on December 1.

## **Obtain a permanent student travel card in one of the following ways:**

- At any metro ticket office: takes 10 days to make; you will receive your card at the same station where you ordered it;
- At the Personalization Department of CJSC Transkard at Chernoretskiy Ln. 3: you'll receive your card immediately;
- Online at [карта-онлайн.рф](https://karta-online.ru): takes 10 days to make; you'll receive your card at the station you selected in your application.

Ordering your personal travel card will cost 250 rubles.



# HOME, SWEET HOME!

ITMO University has more than 10 dormitories to choose from; all our dorms are in close proximity to St. Petersburg Metro stations - so getting to the university on time shouldn't be a problem.

## Here's how to apply for a dorm placement:

- 1 Wait for your official enrollment order to be issued by the Admission Committee;
- 2 Send an email to the Admission Office at [int.students@itmo.ru](mailto:int.students@itmo.ru) with [international@itmo.ru](mailto:international@itmo.ru) and [medinform@itmo.ru](mailto:medinform@itmo.ru) in the copy and include the following information:  
Your full name and the program you've enrolled in (along with a scanned copy of your passport);  
Your current place of stay and the date of your arrival to St. Petersburg;  
Your chest X-ray results (no older than 1 month). You can undergo this test in your home country (in this case, please make sure the results are translated into Russian or English) or in St. Petersburg on the day of your arrival.
- 3 Wait for the confirmation and further guidance from the Dormitory Department.

Learn more about our dorms at [int.itmo.ru/en/dorms](http://int.itmo.ru/en/dorms).  
Thinking about renting an apartment or room in the city?  
Visit [ITMO.NEWS](http://ITMO.NEWS) to learn more:



# CHECK-UP – CHECK!

You can receive medical assistance at any of ITMO’s first aid offices:

- 📍 **Kronverksky Pr. 49, room 205**  
**(2nd floor of the 2nd building)**  
Mon-Fri, 9 AM - 3 PM  
(812) 232-34-50
- 📍 **Lomonosova St. 9, room 2213**  
**(2nd floor of the 2nd building)**  
Mon-Fri, 9 AM - 3 PM  
(812) 315-09-14

## Services available include:

- urgent medical aid
- consultation from a general physician
- medical reference for your dormitory
- short-term (up to three days) sick leave from your classes
- vaccinations
- regular check-ups
- preclinical examinations
- referral for a specialized medical consultation

## IMPORTANT!

Got sick and missed a class? Please make sure to provide a document confirming that you were on sick leave. You'll need to bring this document to a medical office and dean's office within two weeks after you resume your studies.



# We've got your back, always: mental health support

ITMO University offers its students mental health support in both the Russian and English languages. Find our qualified specialists at:

- **Medical, Psychological,  
and Social  
Assistance Center**

📍 Lomonosova St. 9,  
rooms 1410, 1411

📞 (812) 607-02-45

✉️ [psy.line.ITMO@ya.ru](mailto:psy.line.ITMO@ya.ru)

🌐 [vk.com/psyhelp\\_itmo](https://vk.com/psyhelp_itmo)



Consultations are provided  
both face-to-face  
and via Skype and email

# STUDENT LIFE

If you're looking to stand out and show off your talents, ITMO is the place for you! We've got plenty of student clubs to meet your interests: from gamedev and eco-volunteering to stand-up comedy and dancing. Don't miss out on this opportunity to take up a new hobby, acquire useful skills, and meet new friends!

[student.itmo.ru/en/clubs](https://student.itmo.ru/en/clubs)

## WE ARE KRONBARS

ITMO University's student sports club KronBars offers more than 50 kinds of sports for you to enjoy. From basketball and volleyball to rock-climbing, wrestling, and fencing, everyone is bound to find something that suits their taste. These classes are open to all students regardless of their sports proficiency and are divided into three levels:

- **Beginner level**
- **Intermediate level**
- **Professional level**

Want to join? Just follow these five easy steps:

- Go to [kronbars.itmo.ru/en](https://kronbars.itmo.ru/en)
- Click on **Sign up**
- Choose where to take your P.E. classes;
- Choose (up to two) days and times when you'd like to have classes.

📍 [Lomonosova St. 9, room 4401](#)

✉ [mail@kronbars.ru](mailto:mail@kronbars.ru)

🌐 [kronbars.itmo.ru/kronbarsenglish/](https://kronbars.itmo.ru/kronbarsenglish/)



**KRONBARS**

# FIND US ONLINE

[en.itmo.ru](http://en.itmo.ru) - ITMO University's official website

[research.itmo.ru/en](http://research.itmo.ru/en) - all about research at ITMO

[int.itmo.ru/en](http://int.itmo.ru/en) - useful info for international students and staff

[student.itmo.ru/en](http://student.itmo.ru/en) - guide to student life at ITMO

[isu.itmo.ru](http://isu.itmo.ru) - ITMO University's intranet system ISU

[news.itmo.ru/en](http://news.itmo.ru/en) - ITMO.NEWS

[openbooks.itmo.ru/en/](http://openbooks.itmo.ru/en/) - open repository of research articles, papers, and more

[show.ifmo.ru/en](http://show.ifmo.ru/en) - the university's presentation database



## ITMO University on social media:

 [vk.com/spbifmo\\_en](http://vk.com/spbifmo_en)

 [facebook.com/spbifmo](http://facebook.com/spbifmo)

 [instagram.com/itmoru](http://instagram.com/itmoru)

 [youtube.com/ifmoru](http://youtube.com/ifmoru)

 [t.me/itmolnia](http://t.me/itmolnia)